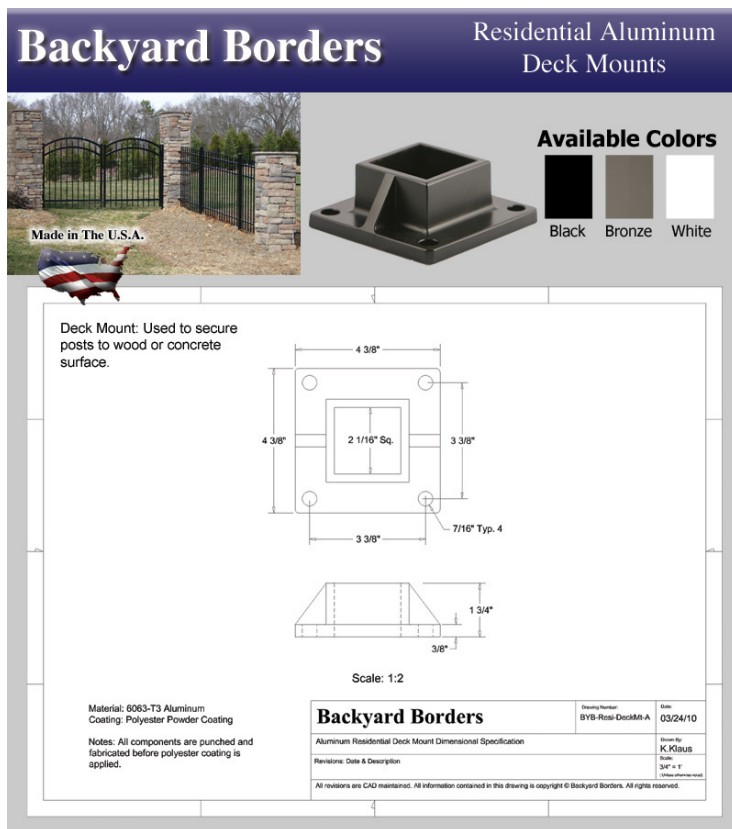


Backyard Borders - Deck Mount Information



To fasten posts to a concrete slab, we always recommend you core drill the concrete. If this is not feasible, you may be able to use our deck mounts.

Deck Mounts are used to mount posts on top of concrete, asphalt or wood surfaces.

Please Note: **We DO NOT supply mounting bolts or anchors with our deck mounts.** There are too many types of materials to which they can be fastened. Therefore, you will need to purchase anchors and/or bolts at your local home improvement store.

Each Deck Mount has pre-drilled, 7/16" diameter holes for mounting.

Step 1: Establish your fence line on the surface onto which you will be mounting using a chalk line or string line.

Step 2: Fasten the deck mounts to the surface using the correct mounting hardware appropriate for the material to which you are mounting; i.e., concrete anchors for concrete surfaces, wood lag bolts for wood surfaces, asphalt anchors for asphalt surfaces. Be sure to check the distance between each deck mount to make certain that the fence panels fit correctly.

Step 3: Once the line is established and the mounts are fastened, cut your posts to length. Note: If your fence is being installed around a pool, the maximum space between the bottom rail and the mounting surface is 4".

Step 4: Slide your posts into the mounts one at a time and install the fence sections as you go.

Step 5: Once the sections are installed into the posts, drill a 3/16" diameter hole in each of the deck mounts perpendicular to the post. Use a self drilling/tapping screw to secure each post to the deck mount.