

Backyard Borders - Styles 2, 3 & 5 Non Assembled Fence Sections

Tools Needed

Electric Drill, #2 Square Head Bit



Non assembled fence sections come complete and ready to assemble. Each fence section will include the following:

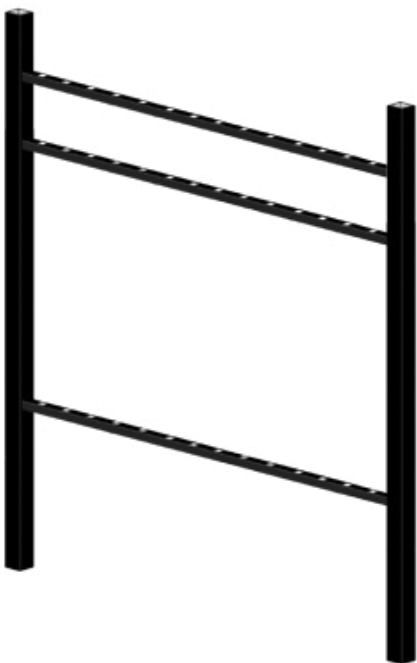
Styles 2 & 3 - **36" height, 48" height, 54" height, and 60" height** - 15 pickets per section, 2 rails with punched picket holes, 1 rail without holes, 45 square head self drilling screws.

Styles 5 - **72" height** - 15 pickets per section, 3 rails with punched picket holes, 1 rail without holes, 60 square head self drilling screws.

Style 5 - **36" height, 48" height, 54" height, and 60" height** - 31 pickets per section, 2 rails with punched picket holes, 1 rail without holes, 93 square head self drilling screws.

Style 5 - **72" height** - 31 pickets per section, 2 rails with punched picket holes, 1 rail without holes, 93 square head self drilling screws.

Assembly



Step 1: Place 2 posts on a level flat surface with the routed rail holes facing each other. (If you did not purchase posts, please refer to the rail spacing on the specification drawings on pages 3, 4, and 5.)

Step 2: Insert the lower rails into the post holes. The lower rails are the rails with the punched picket holes. There will be 2 lower rails for all heights except for 72." 72" height sections will have 3 lower rails.

Backyard Borders - Styles 2, 3 & 5 Non Assembled Fence Sections



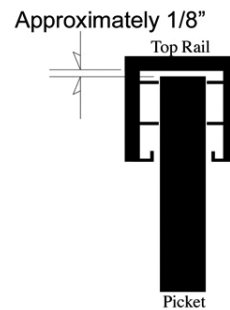
Step 3: Insert pickets into each picket hole.

Note: On Style 3 sections, start on the end with a pressed point picket.

Step 4: Once you have installed all of the pickets in the rails, insert the top rail into the posts.

Step 5: Be sure to push all pickets from the bottom into the top rail leaving approximately a 1/8" gap between the top of the picket and the rail. On Style 3 sections it is recommended to use a straight edge across the bottom of the pickets to make sure that all pickets are level and even in height.

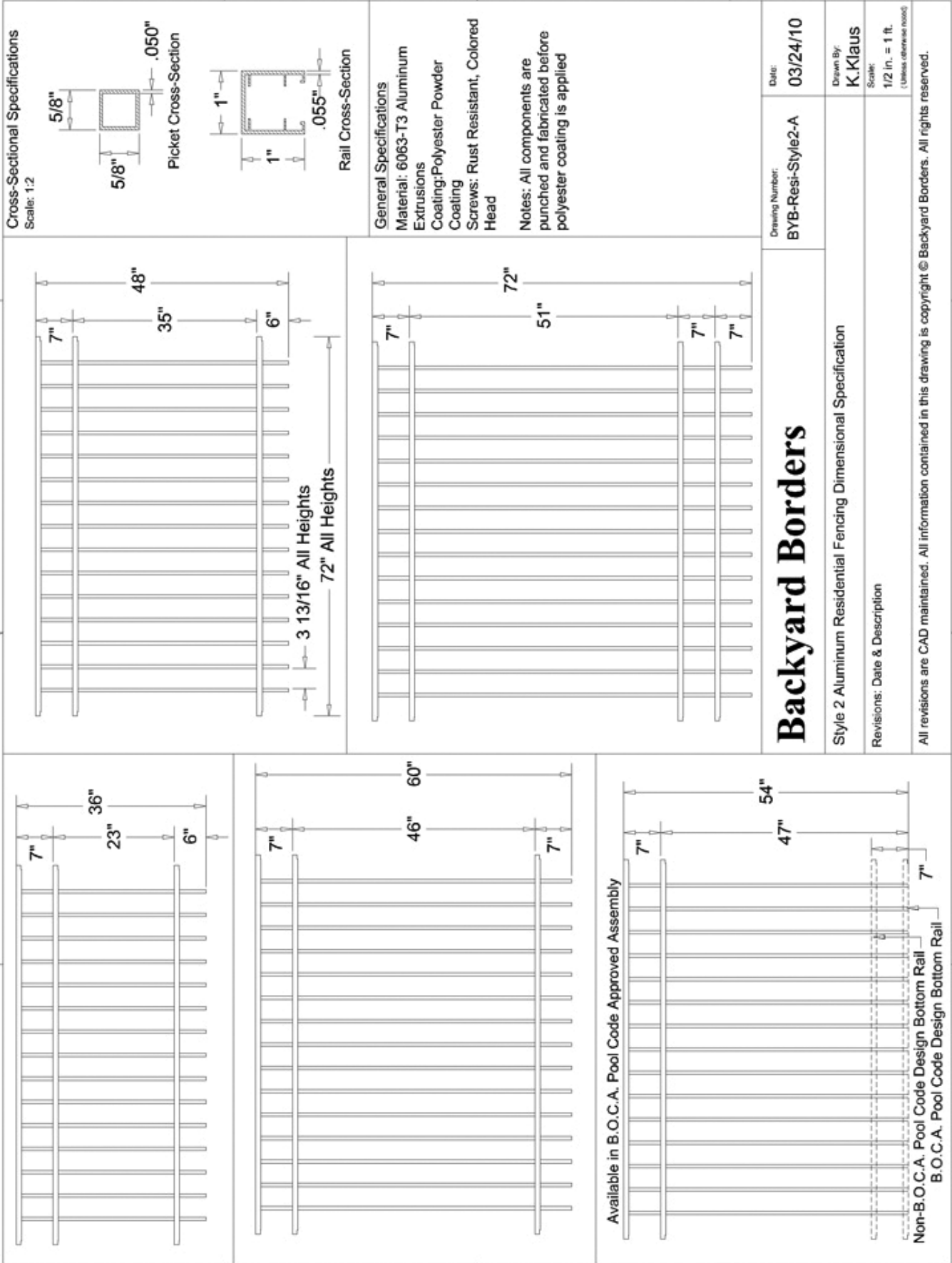
Step 6: Using an electric drill with a #2 square bit, screw each picket to the rails through the pre-drilled holes



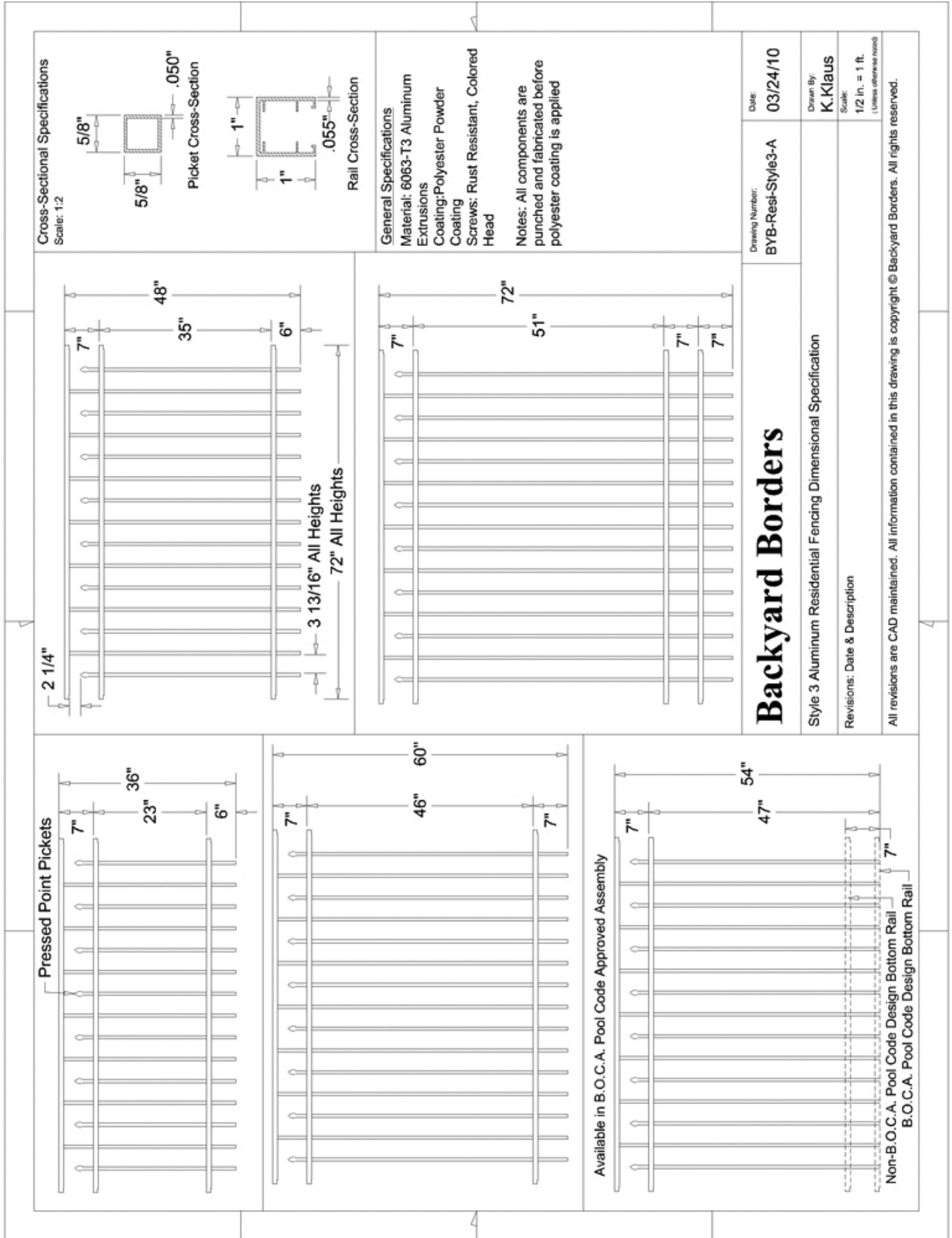
Step 7: Remove posts from ends.

Your assembled section is now ready to be installed. Please visit www.backyardborders.com to view our recommended aluminum fencing installation instructions.

Backyard Borders - Styles 2, 3 & 5 Non Assembled Fence Sections



Backyard Borders - Styles 2, 3 & 5 Non Assembled Fence Sections



Backyard Borders - Styles 2, 3 & 5 Non Assembled Fence Sections

